

# OFFICE / WAREHOUSE SPACE

For Lease



**14,000 +/- Sq Ft Available**  
4225 Port Drive, Lee's Summit, Missouri



Estimated Population  
**102,777**

Average Household Income  
**\$88,138**

Five Mile Radius

- Great location
- Good access off Interstate 470
- 4,500 square foot office
- 9,500 square foot warehouse
- Fenced outside storage
- Concrete parking lot

BLOCK & COMPANY, INC., Realtors 816.753.6000  
In the Skelly Building on the Country Club Plaza  
605 West 47th Street, Suite 200, Kansas City, Missouri 64112

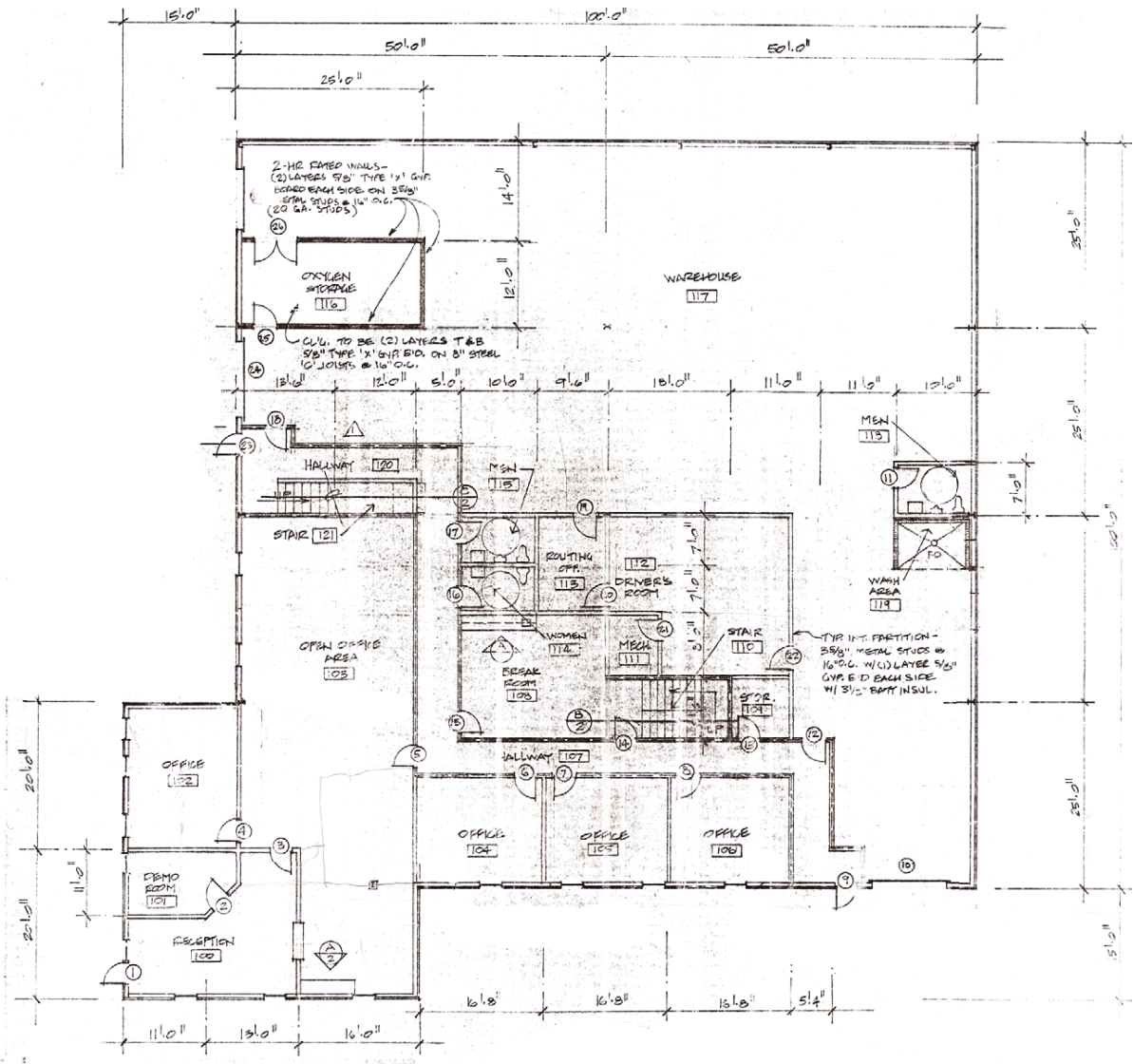
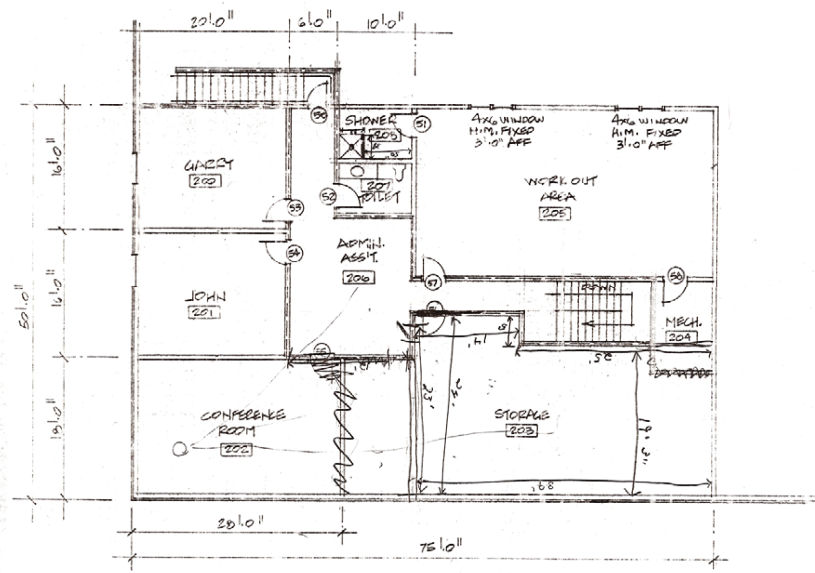
For Information Contact:

**William Glasgow**  
816.412.7394  
wglasgow@blockandco.com

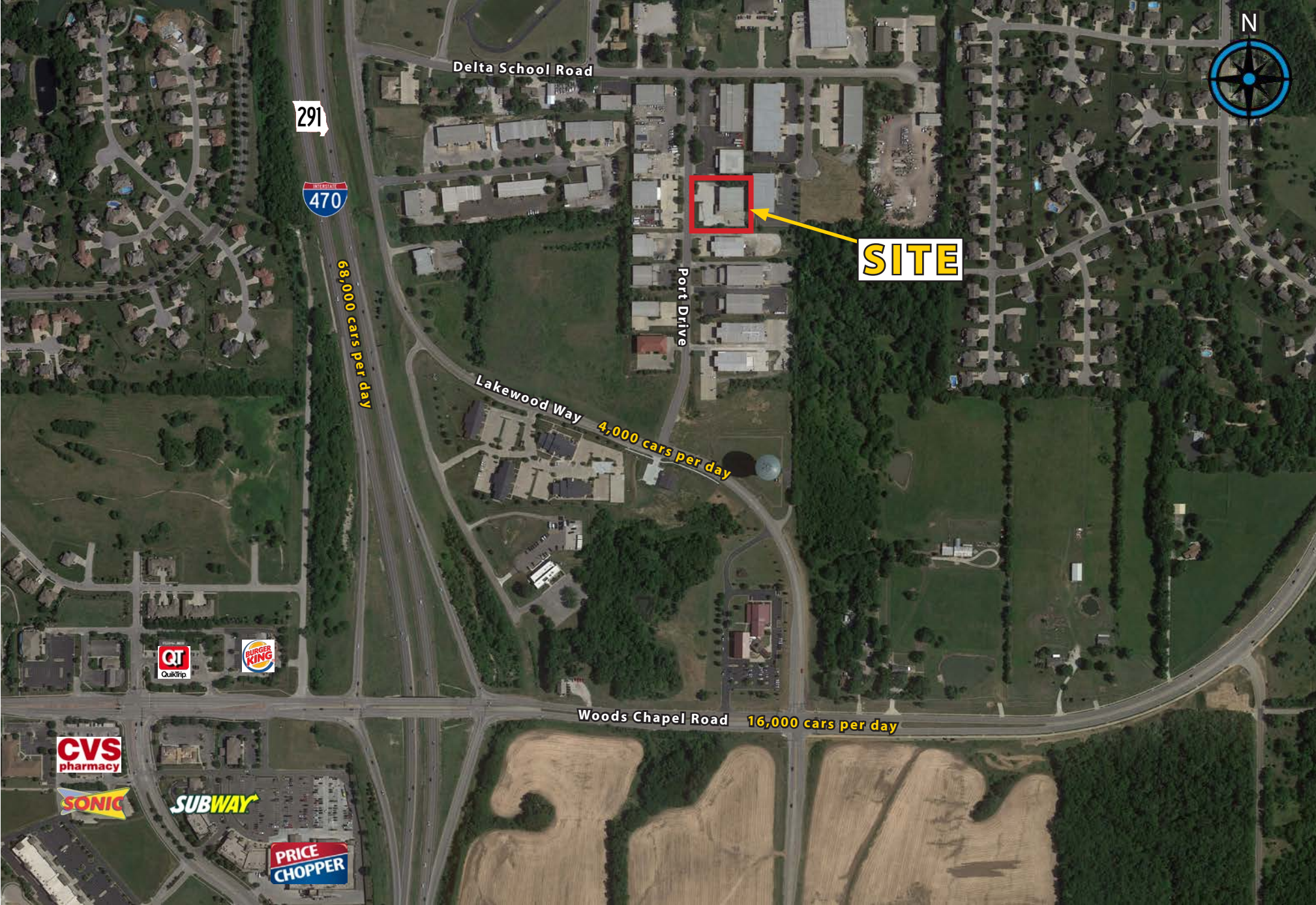
# 4225 Port Drive, Lee's Summit, Missouri



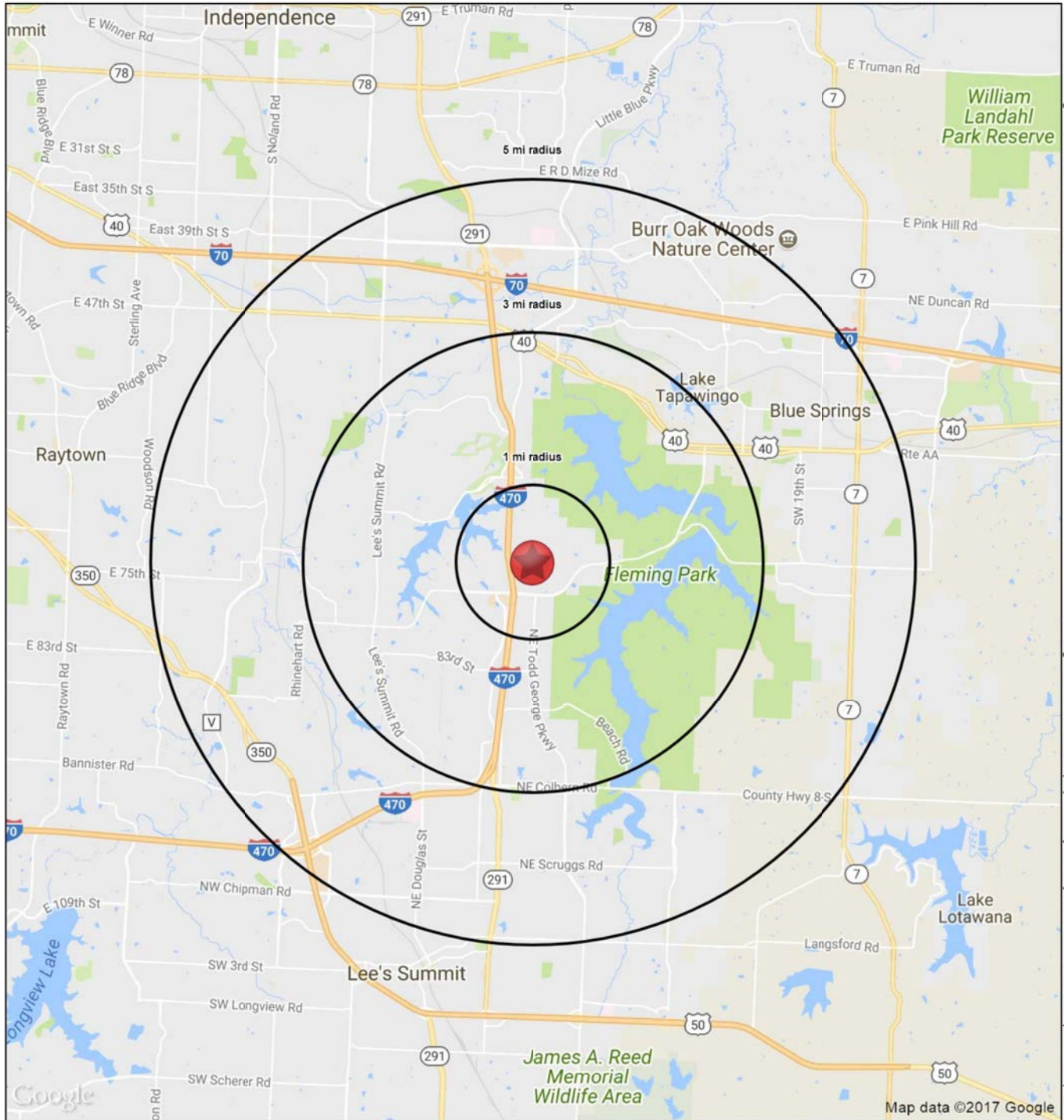
# 4225 Port Drive, Lee's Summit, Missouri



# 4225 Port Drive, Lee's Summit, Missouri







Lat: 38.98818 Long: -94.35143 Zoom: 13.77 mi

Logos are for identification purposes only and may be trademarks of their respective companies.

**4225 NE Port Drive**  
**Lee's Summit, MO 64064**

*November 2017*

This map was produced using data from private and government sources deemed to be reliable. The information herein is provided without representation or warranty

# SUMMARY PROFILE

2000-2010 Census, 2017 Estimates with 2022 Projections

Calculated using Weighted Block Centroid from Block Groups

Lat/Lon: 38.9882/-94.3514

RS1

4225 NE Port Drive		1 mi radius	3 mi radius	5 mi radius
Lee's Summit, MO 64064				
<b>POPULATION</b>	2017 Estimated Population	5,756	22,214	102,777
	2022 Projected Population	5,933	22,865	105,644
	2010 Census Population	4,583	20,491	98,273
	2000 Census Population	3,101	14,916	85,635
	Projected Annual Growth 2017 to 2022	0.6%	0.6%	0.6%
	Historical Annual Growth 2000 to 2017	5.0%	2.9%	1.2%
	2017 Median Age	39.6	40.4	38
<b>HOUSEHOLDS</b>	2017 Estimated Households	2,182	8,582	40,805
	2022 Projected Households	2,257	8,863	41,990
	2010 Census Households	1,716	7,821	38,337
	2000 Census Households	1,118	5,505	32,052
	Projected Annual Growth 2017 to 2022	0.7%	0.7%	0.6%
	Historical Annual Growth 2000 to 2017	5.6%	3.3%	1.6%
<b>RACE AND ETHNICITY</b>	2017 Estimated White	82.6%	83.4%	83.8%
	2017 Estimated Black or African American	10.0%	10.1%	9.3%
	2017 Estimated Asian or Pacific Islander	4.2%	3.0%	2.1%
	2017 Estimated American Indian or Native Alaskan	0.2%	0.2%	0.3%
	2017 Estimated Other Races	3.0%	3.3%	4.5%
	2017 Estimated Hispanic	2.9%	3.4%	5.1%
<b>INCOME</b>	2017 Estimated Average Household Income	\$109,065	\$103,497	\$88,138
	2017 Estimated Median Household Income	\$102,322	\$90,023	\$72,721
	2017 Estimated Per Capita Income	\$41,459	\$40,161	\$35,076
<b>EDUCATION (AGE 25+)</b>	2017 Estimated Elementary (Grade Level 0 to 8)	0.3%	0.9%	1.3%
	2017 Estimated Some High School (Grade Level 9 to 11)	1.8%	2.4%	4.0%
	2017 Estimated High School Graduate	18.6%	20.0%	24.5%
	2017 Estimated Some College	24.6%	23.8%	25.6%
	2017 Estimated Associates Degree Only	10.3%	8.9%	8.6%
	2017 Estimated Bachelors Degree Only	26.1%	25.2%	22.9%
	2017 Estimated Graduate Degree	18.4%	18.8%	13.1%
<b>BUSINESS</b>	2017 Estimated Total Businesses	340	895	4,499
	2017 Estimated Total Employees	3,489	11,094	56,365
	2017 Estimated Employee Population per Business	10.3	12.4	12.5
	2017 Estimated Residential Population per Business	16.9	24.8	22.8

This report was produced using data from private and government sources deemed to be reliable. The information herein is provided without representation or warranty.